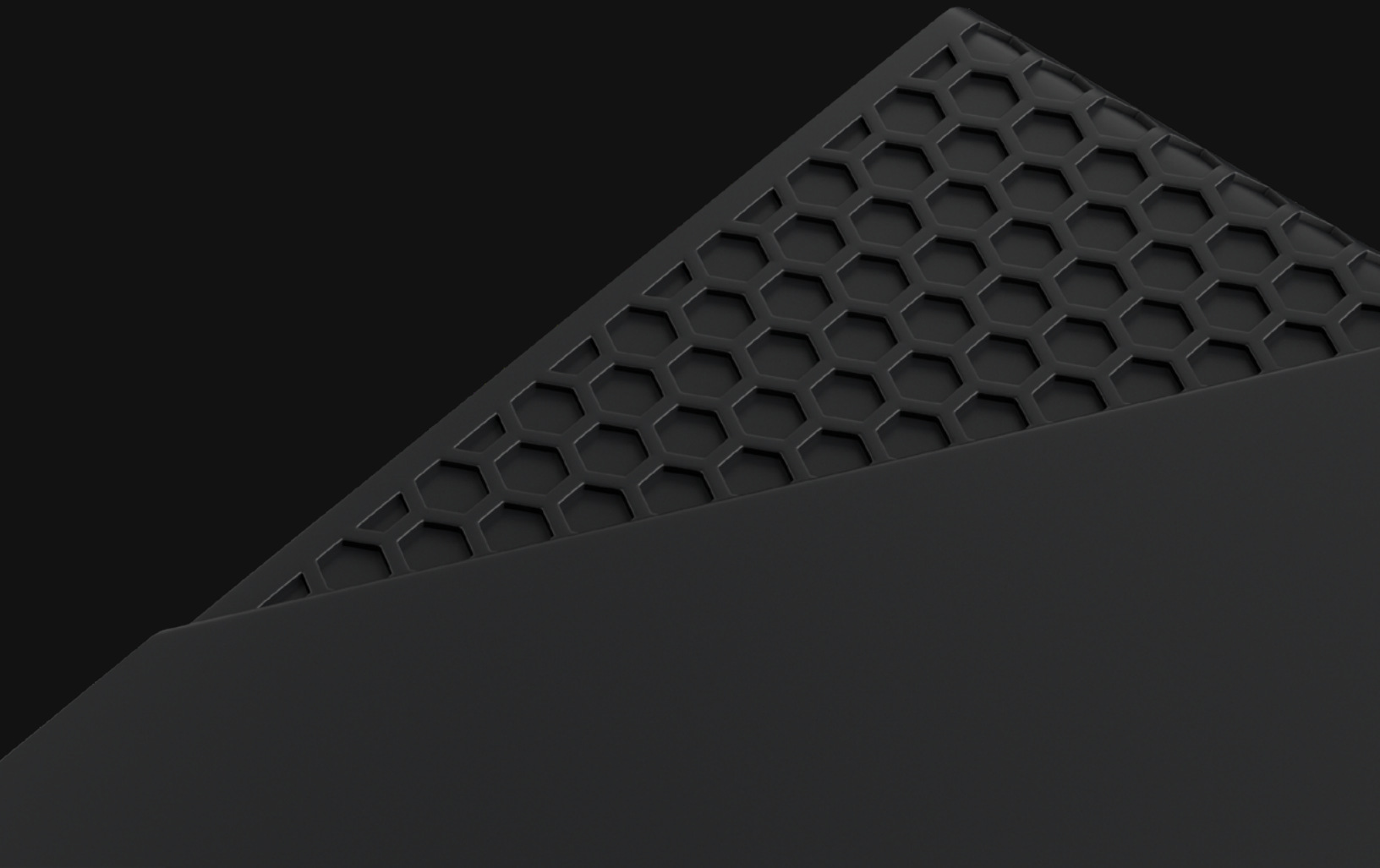


Government Specification Sheet





Meet The Rock

A next-generation touchless access control solution that future-proofs physical security while decreasing friction.



Local, State, and Federal Government Entities Can Affordably Maximize the Power of Existing Infrastructure While Boosting Security

There are a variety of regulations that federal, state, and local governments must adhere to in protecting facilities, assets, and people. The Alcatraz Rock frictionless access control solution supplements any existing security platform in use by a government facility. This maximizes the use of existing infrastructure while also boosting security. The Rock can provide comprehensive single or dual-factor authentication for the many areas within government: Local, state, and federal facilities; military facilities; and prisons, jails, and other correctional facilities.

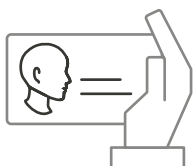
Key Benefits

- Frictionless access control reduces touch points.
- Detect wearing masks and control access based on compliance.
- Mitigate risk, reduce the need and expense for security officers.

Secure 3D Facial Authentication

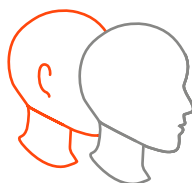
- 1FA** For environments that allow a completely frictionless face-only access control experience. Users are passively authenticated as they go through spaces.
- 2FA** For environments that require more security without increased friction, dual factor face & badge mode is available. Users are authenticated based on the security needs of entry points.

Enrollment Intelligence



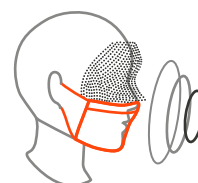
Users self-enroll using their current badges. Artificial intelligence works continuously while learning and improving.

Tailgating Intelligence



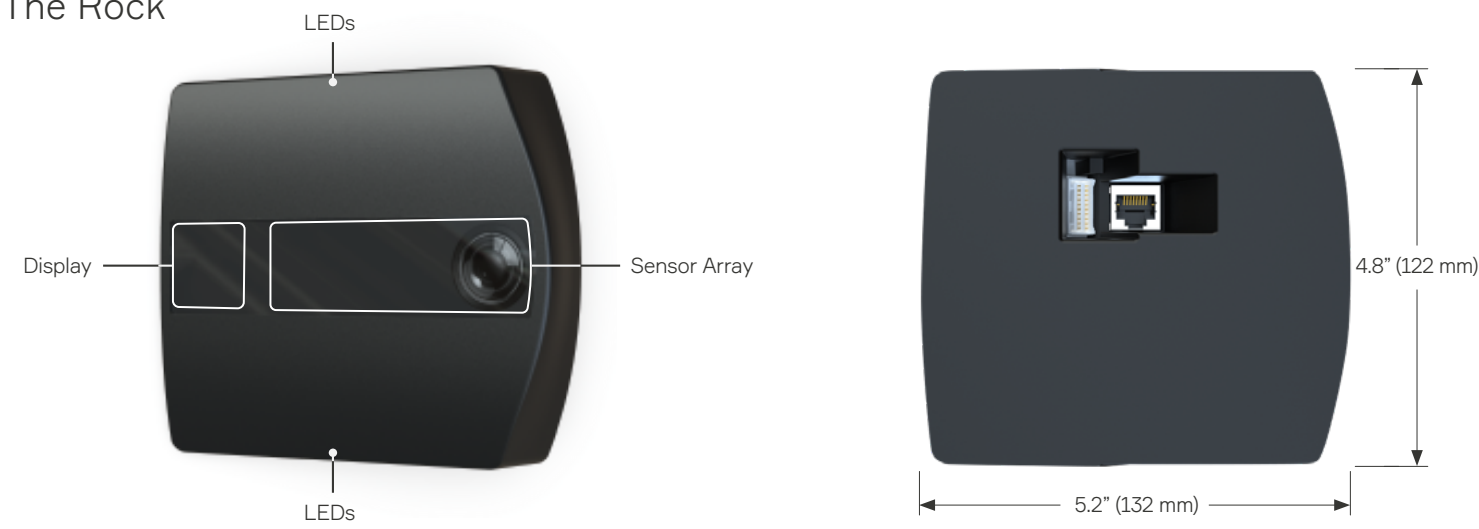
Passively sensing in the background. Detect vs. prevent tailgating based on physical security needs per entry point.

Mask Intelligence



Access control based on mask detection. The Rock continues transmitting badge numbers to Access Control System.

The Rock



| | | |
|----------------|-------------------------------|---|
| Biometrics | FAR (1:N) | Up to 0.001% |
| | Per Device (1:N) | 10,000 profiles |
| | Throughput | 30 People Per Minute |
| | Authentication Range | 12" - 47" (30cm - 120cm) |
| Connectivity | Access Control Input & Output | Wiegand, OSDP |
| Tamper | On-Board Tamper | Yes |
| Video | FOV | 110 °H x 90 °V |
| Network | Network | 10/100/1000BASE-TX |
| | ONVIF | ONVIF® compliant with Profile S, Profile T |
| | Security | Encryption TLS 1.2 - for Cloud/ 1.3 for On-Prem, 802.1x port based authentication |
| Electrical | Power Source | PoE+: UL294B Listed PoE+ Source recommended |
| Environmental | Operating Temperature | -20 °C to +66 °C (-4 °F to 150 °F) |
| Certifications | Certifications/Directives | ETL, CE, ROHS, Reach (SVHC), WEEE, NDAA |
| | Environmental | IP4X Weather Rating, IK4 Impact Rating |

Built for Physical Access Control in Government

- As easy to set up as a badge reader
- Uses existing Wiegand / OSDP wiring
- Works with any access control system
- POE+ connectivity
- Enterprise-grade networking & security
- On-prem and Cloud options
- 1FA & 2FA hybrid options

