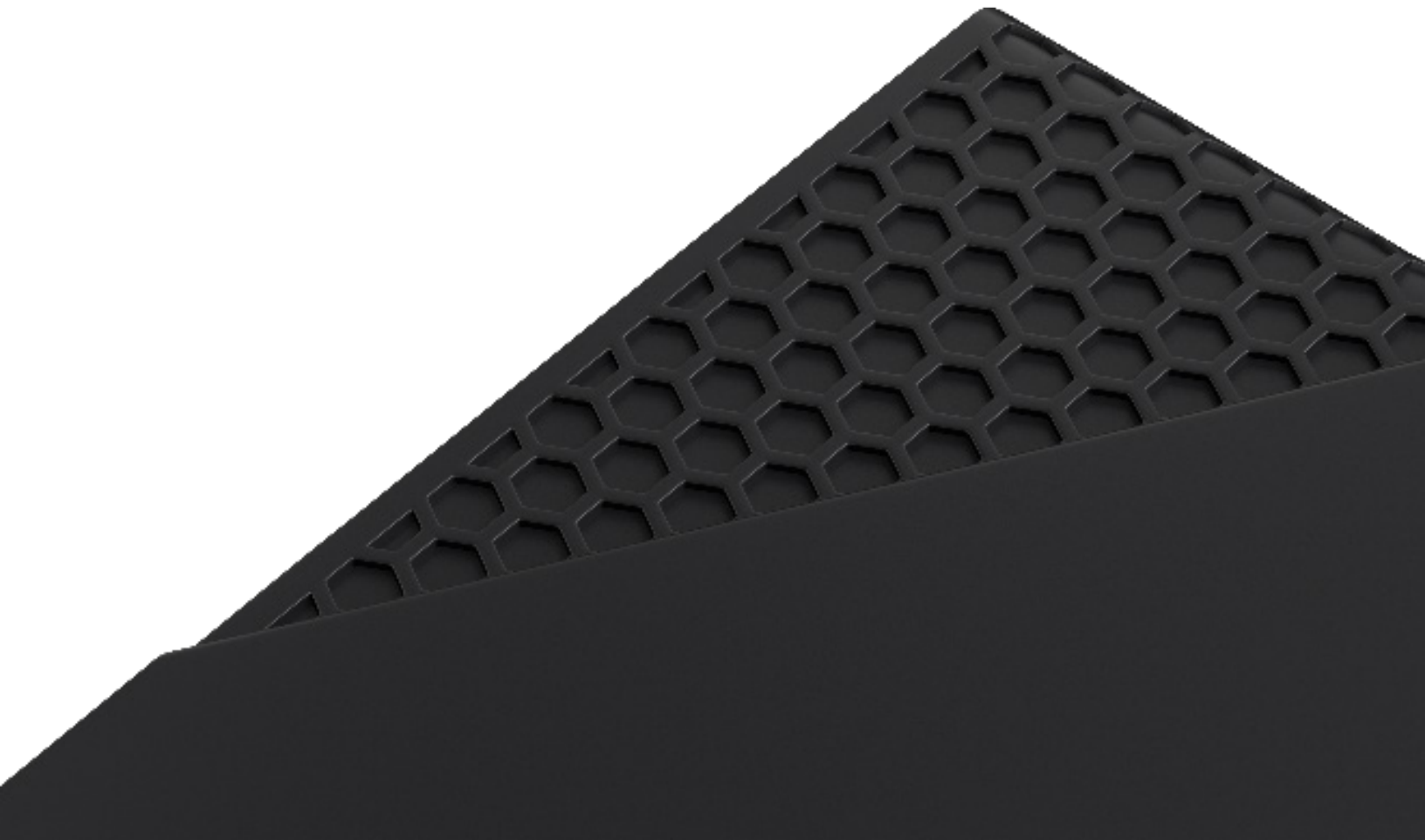


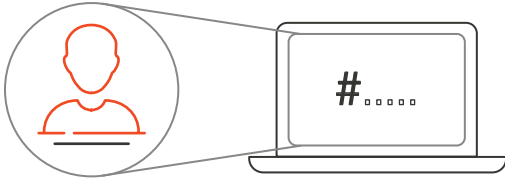
# How the Rock Works

## Enrollment & Authentication



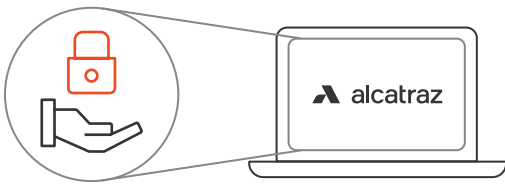
# Your Privacy is Ensured

What is a biometric profile? ...Just a number



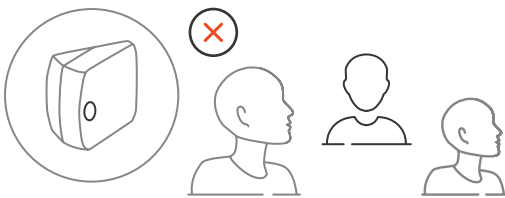
The profile does not include identifying information such as name and can not be used to synthesize an image or video.

Your biometric profile format is proprietary to the Alcatraz system



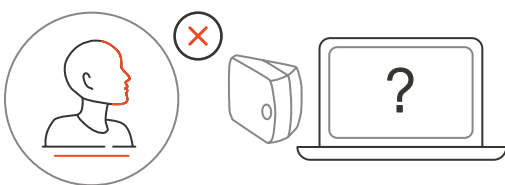
The profile format is propriety, strongly encrypted, and not shared with third parties.

Alcatraz products are not tracking devices



It detects and authenticates the profiles of only authorized people passing through an entry point.

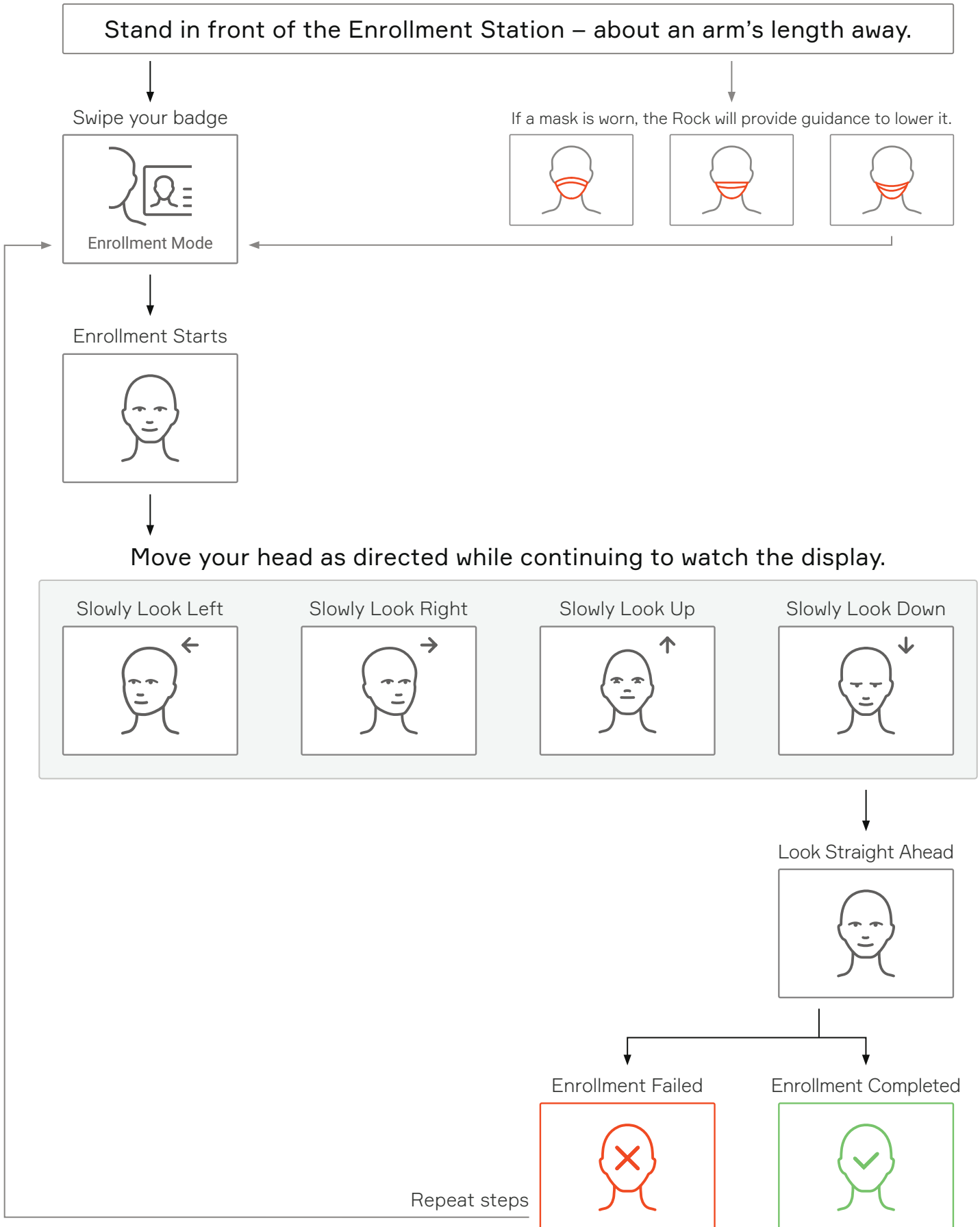
If your profile is not enrolled your data does not exist in our system



If you are not enrolled, your profile will not exist in our database. If your profile is deleted, you may lose access to an entry point.

\*Alcatraz delivers only the services your company has requested. Please inquire with your employer for more information on terms and services.

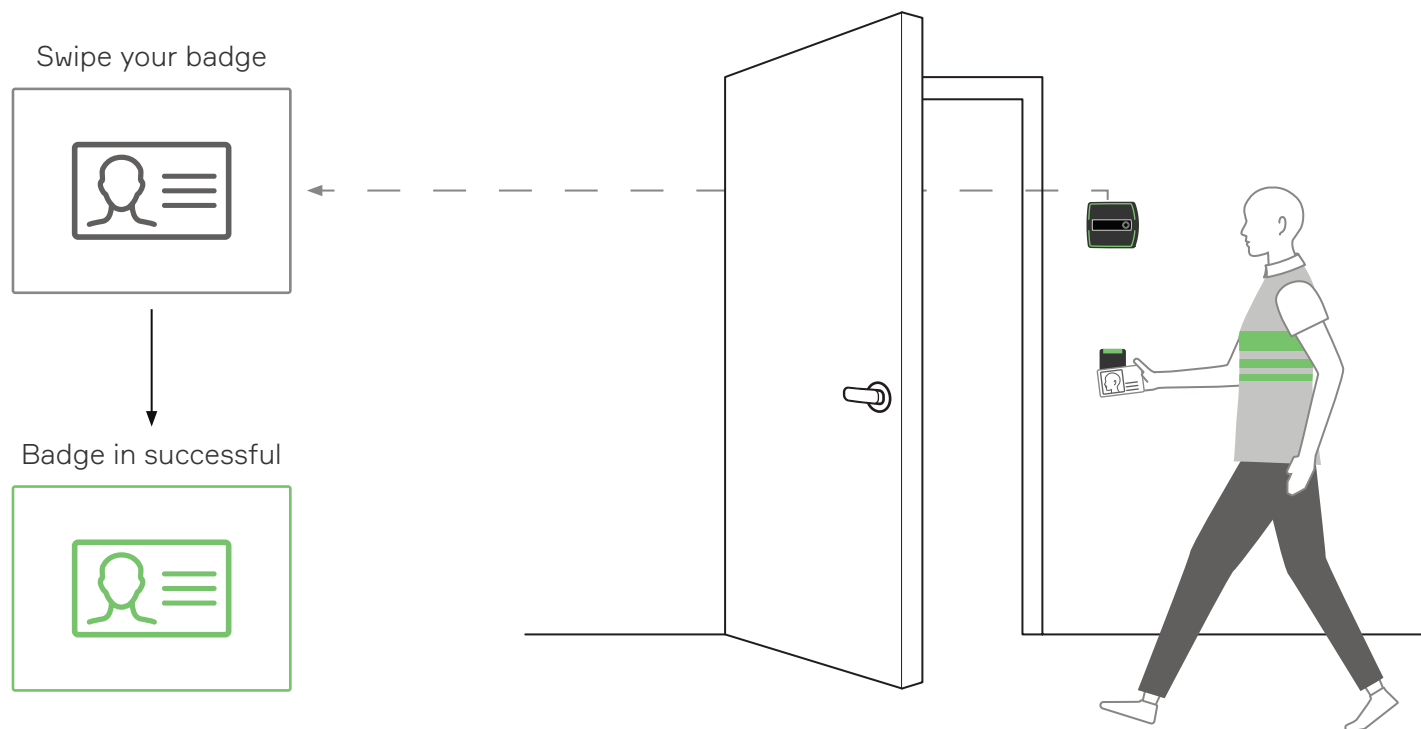
# Manual Enrollment at the Enrollment Station



# Auto-Enrollment & Single Factor Authentication

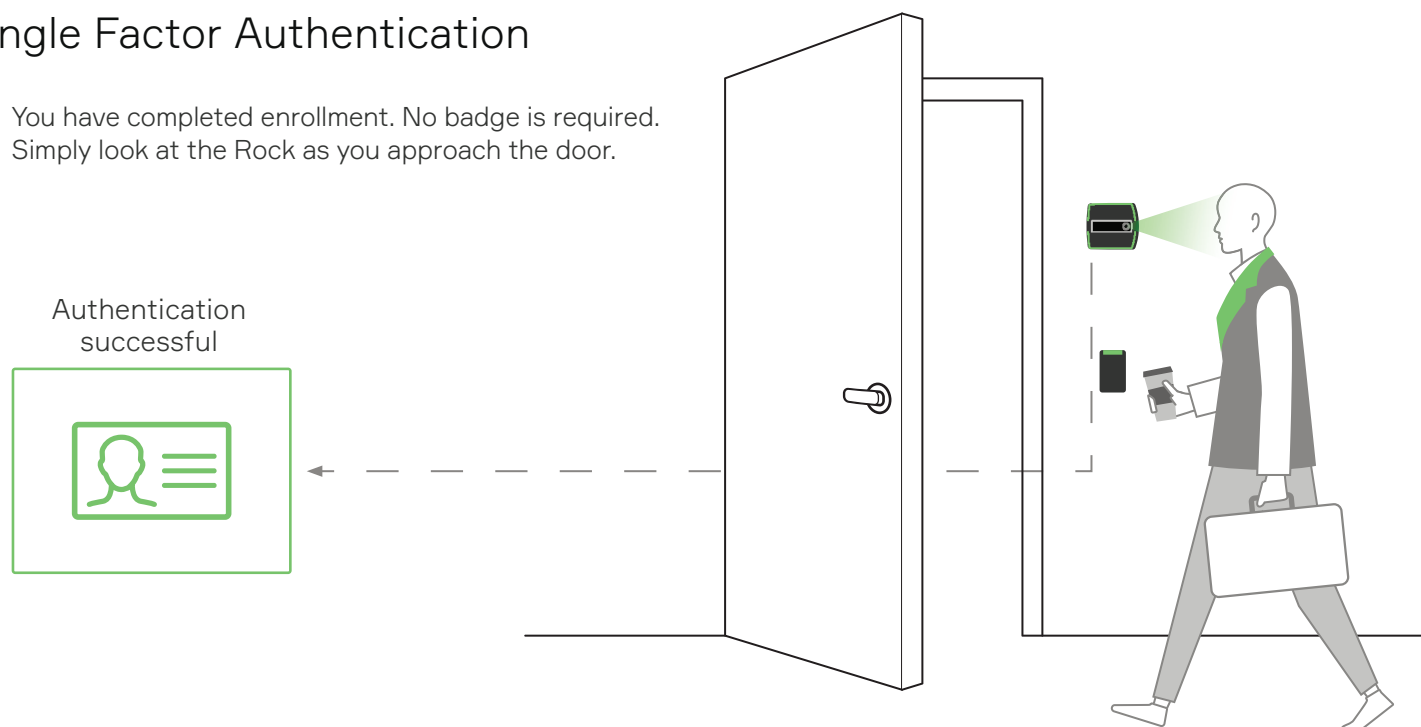
## Auto – Enrollment

The Rock learns as you badge-in. Badge-in at least 4-6 times over the course of 1-2 days and a minimum 5 minutes apart. After that, you are enrolled.



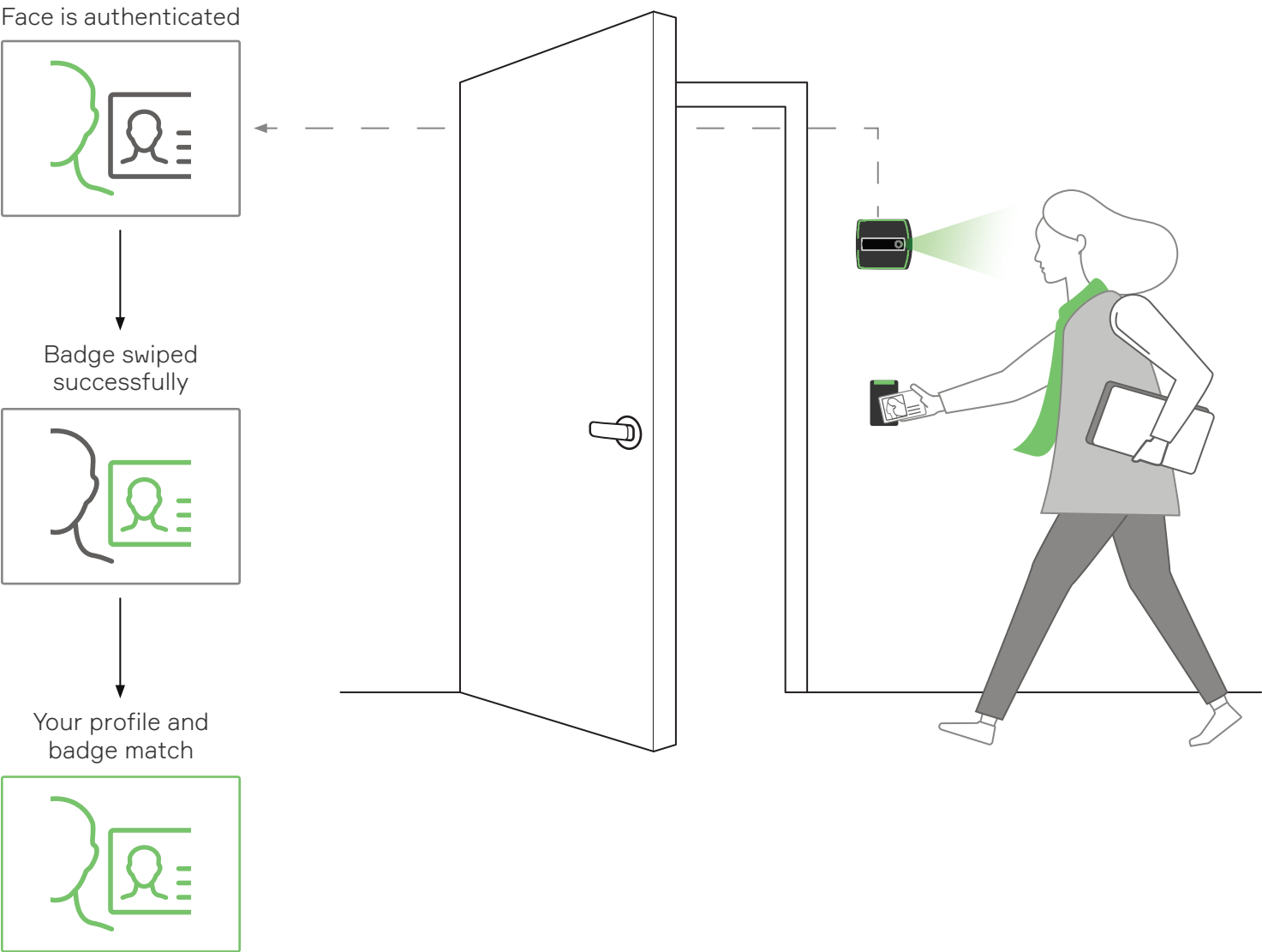
## Single Factor Authentication

You have completed enrollment. No badge is required. Simply look at the Rock as you approach the door.



# Two Factor Authentication

You have completed enrollment at an Enrollment Station.  
As you approach the Rock and badge in, the Rock captures your face and verifies that your profile and your badge match.



Seeing this on the Rock's display?

You will need to enroll at the enrollment station.  
Please visit it and complete your enrollment.





[www.alcatraz.ai](http://www.alcatraz.ai)